

### Three Phase Squirrel Cage Induction Motor

Motor type TA3-132S-6 B3



#### Electrical Data

| RATED VALUES |       |    |       |           |        |       | STARTING VALUES |  |  |               | BREAKDOWN | EFFICIENCY |      |      | EFFICIENCY CLASS |
|--------------|-------|----|-------|-----------|--------|-------|-----------------|--|--|---------------|-----------|------------|------|------|------------------|
| VOLTAGE      | POWER |    | SPEED | CURRENT   | TORQUE | Cos φ | CURRENT         |  | TORQUE                                 |               | TORQUE    | %          |      |      | IEC 60034-30-1   |
|              | V     | kW | Hz    | rpm       | A      | Nm    | 4/4             | I <sub>A</sub> / I <sub>N</sub><br>Y D | M <sub>A</sub> / M <sub>N</sub><br>Y D | Mk / Mn<br>Nm | 4/4       | 3/4        | 2/4  | IE   |                  |
| 230/400      | 3     | 50 | 980   | 12.65/7.3 | 29,23  | 0,68  | 5,3             | -                                      | 1,8                                    | -             | 3,0       | IE3-85,6%  | 86,9 | 84,7 | IE3              |
| 265/460      | 3,45  | 60 | 1175  | 12.5/7.2  | 28,04  | 0,69  | 5,1             | -                                      | 1,7                                    | -             | 2,9       | -          | -    | -    |                  |

#### Mechanical Data

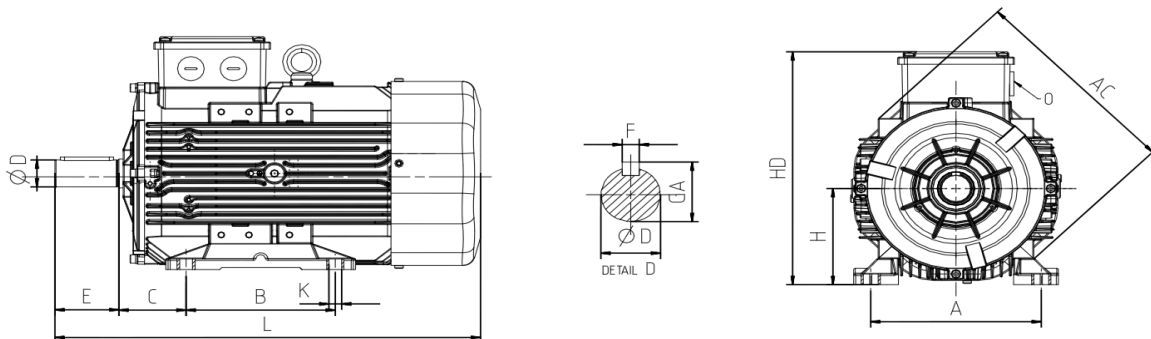
|                            |                       |                          |              |
|----------------------------|-----------------------|--------------------------|--------------|
| Bearing DE                 | 6208-ZZ               | Color                    | RAL 7030     |
| Bearing NDE                | 6208-ZZ               | Motor protection         | No           |
| Lubricants                 | Shell Gadus S5 V220-2 | Method of cooling        | IC 411       |
| Condensation drain hole    | No                    | Terminal box position    | Top          |
| External earthing terminal | Yes                   | Material of terminal box | Aluminium    |
| Vibration class            | A                     | Terminal plate thread    | M6           |
| Insulation Class           | F                     | Cable gland              | 1xM32        |
| Duty type                  | S1                    | Clamping range           | 18-25 mm     |
| Direction of rotation      | Clockwise             | Mounting type            | IM 1001 (B3) |
| Housing material           | Aluminium             |                          |              |
| Type of balancing          | Half Key              |                          |              |

#### Environmental Data

#### Others

|                          |               |   |             |
|--------------------------|---------------|---|-------------|
| Ambient Temperature      | -20 / + 40 °C | Type of protection                      | IP 56       |
| Altitude above sea level | 1000 m        | Sound Pressure Level 50/60Hz dBA        | 61/64       |
|                          |               | Moment of Inertia (kg.mm <sup>2</sup> ) | 0,0356      |
|                          |               | Standard                                | IEC 60034-1 |
|                          |               | Weigth (Kg)                             | 52,5        |

#### Dimensions



| Main Dimensions |     |         | Foot Mounted Motors |     |     |    |    | Shaft |    |    |    | Flange Mounted Motors |   |   |   |
|-----------------|-----|---------|---------------------|-----|-----|----|----|-------|----|----|----|-----------------------|---|---|---|
| AC              | L   | B       | A                   | H   | HD  | K  | C  | D     | E  | GA | F  | P                     | N | M | R |
| 260             | 481 | 140-178 | 216                 | 132 | 322 | 12 | 89 | 38    | 80 | 41 | 10 | 0                     | 0 | 0 | 0 |